

REAL-TIME
RE-EMBEDDED

Cat.6A

fully
shielded

PoE+

10 GBE

IP68

TOC RJ45 IP68

IP68 Outdoor Connector with RJ45 Cat.6A Connection Technology

TOC stands for Telecommunications Outdoor Connectors and offers wiring professionals the reliability and flexibility they need for outdoor applications. The handy, easy to install TOC connectors are used for data- and telecommunication in mobile radio, process-, utility- and traffic automation but also in harsh environment applications of machine and plant engineering. The TOC series Flex coming with the newly available field-assembly RJ45

plug MFP8 Cat.6A and RJ45 keystone AMJ-S Module Cat.6A is compliant with the specifications of the protection class IP68 and can be used in a temperature range from -40 °C to 85 °C due to its excellent material properties.

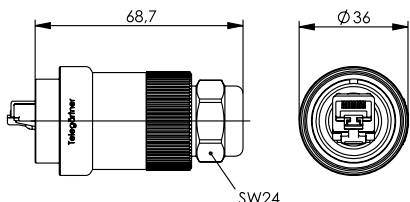
Customers benefit: fast and easy installation, high transmission reliability and resilience and more flexibility in the network design.

Performance Characteristics TOC Plug Set MFP8 T568B Cat.6A

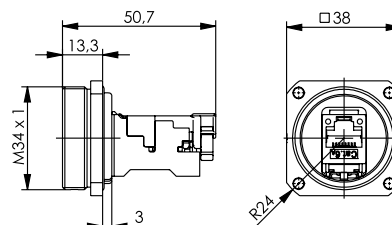
- Housing: brass nickel-plated
- RJ45 plug MFP8 Cat.6A acc. to IEC 60603-7-51 (500 MHz)
- RJ45 plug MFP8 Cat.6A UL listed (E244889)
- suitable for 10 GBE acc. to IEEE 802.3 an and PoE+ acc. to IEEE 802.3 at
- 360° shielding
- Cu-conductor: solid: 0.51-0.64 mm (AWG24/1 – AWG22/1)
stranded: 0.46-0.76 mm (AWG27/7 – AWG22/7)
- Cu insulation diameter: 0.85-1.6 mm / cable OD: 6.5-9.5 mm
- temperature range: -40° to +85°C
- protection class IP68 acc. to IEC 60529

Performance Characteristics TOC Bulkhead Set AMJ-S Module T568B Cat.6A

- Housing: brass nickel-plated
- RJ45 AMJ-S Module Cat.6A acc. to IEC 60603-7-51 (500 MHz)
- suitable for 10 GBE acc. to IEEE 802.3 an and PoE+ acc. to IEEE 802.3 at
- 360° shielding
- Cu-conductor: solid: 0.40-0.64 mm (AWG26/1 – AWG22/1)
stranded: 0.46-0.76 mm (AWG27/7 – AWG22/7)
- Cu insulation diameter: 0.9-1.6 mm
- cable OD: 5-9 mm
- temperature range: -40° to +85°C
- protection class IP68 acc. to IEC 60529

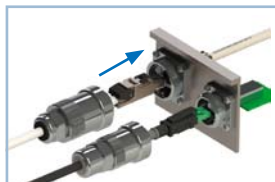


Order no.	Description	Type
J60026A0000	TOC Plug Set IP68	MFP8 T568B Cat.6A AWG22-27
H60030A0001	TOC Plug Protective Cap	brass nickel-plated, with chain

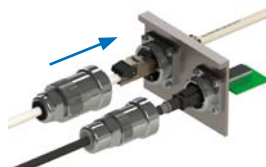


Order no.	Description	Type
J60020A0000	TOC Bulkhead Set IP68	AMJ-S Module T568B Cat.6A
H60030A0000	TOC Bulkhead Protective Cap	brass nickel-plated, with chain

Assembly steps



1. Plug the plug insert into the insert inside of the bulkhead regardless of the connector alignment



2. Push the plug housing over the plug insert



3. Screw the plug to the bulkhead – interface is locked, sealed and relieved of strain by one turning movement